



"Jezebel II"

Size (HxW) : 38x19 cm Framed

Style : realism / Tech. : Watercolour

Theme : Character / People / Category : Painting

Sold

Year : 2002



"Mr. Van Syke"

Size (HxW) : 152x99 cm

Style : realism / Tech. : oil on strengthened canvas

Theme : Character / People / Category : Painting

Year : 2009

Desc. : Portrait of a contemporary blacksmith at work in his south Minneapolis shop.



"Upper Mississippi Valley Sicilian"

Size (HxW) : 168x56 cm

Style : realism / Tech. : oil on strengthened canvas

Theme : Character / People / Category : Painting

Year : 2009

Desc. : Portrait of a Sicilian living in Minneapolis, MN USA



"Saint"

Size (HxW) : 51x41 cm

Style : realism / Tech. : Oil on board

Theme : Allegories / Category : Painting

Year : 2007

Desc. : This original oil on panel is the second in a diptych called Sinner and Saint. These paintings explore my views on how women are portrayed in history. In a previous world order women filled many leadership roles including: wise women; storytellers; healers; warriors; hunters; oracles, chieftains, and sorceresses. A fundamental shift appears to have happened sometime prior to the advent of our Common Era. Many of the myths and legends concerning powerful women of the ancient past were modified or appended, with the objective of portraying them (and by extension - all women) in a less positive light. The ancient Greeks, Persians, and Romans may have started this process, but it was enthusiastically carried forward by the monotheistic descendants of the Sons of Abraham. The legends of Medea, Eve, Jezebel, and Joan of Arc are but a few examples of stories designed to undermine women's influence in human society. This diptych explores how women have been villainized in religion and history, but also reveals how our ancient inheritance survives to the present ? albeit just beneath the surface.



"Sinner"

Size (HxW) : 51x41 cm Framed

Style : realism / Tech. : Oil on board

Theme : Allegories / Category : Painting

Year : 2007

Desc. : First painting in a diptych called "Sinner and Saint."



"A Convenient Myth"

Size (HxWxP) : 61x91x1 cm Framed

Style : realism / Tech. : Oil on hardboard

Theme : nudes / Category : Painting

Year : 2007



"Midwinter Blues II"

Size (HxW) : 91x64 cm Framed

Style : realism / Tech. : Oil on board

Theme : nudes / Category : Painting

Sold

Year : 2007

Desc. : The subject of this painting refers to a Finnish-American folk cure for seasonal affective disorder (SAD) that involves bathing with grasses and herbs. The leaves are Labrador Tea (*Rhododendron groenlandicum*), collected from a Black Spruce bog on the shores of the Stony River, near Isabella, Minnesota. Archival quality limited edition giclee prints are available.



"A Boy Named Sue"

Size (HxW) : 76x125 cm Framed

Style : realism / Tech. : Oil on wood

Theme : Story / Category : Painting

Year : 2008

Desc. : Named after the Johnny Cash song of that title. That which does not kill us makes us stronger. Friedrich Nietzsche



"Susanna the Elder"

Size (HxW) : 61x41 cm Framed

Style : realism / Tech. : Oil on board

Theme : Story / Category : Painting

Sold

Year : 2004

Desc. : Susan posing as Susanna the Elder



"Urban American Gothic"

Size (HxWxP) : 97x124x2 cm

Style : realism / Tech. : Oil on hardboard

Theme : Story / Category : Painting

Year : 2008

Desc. : Oil on panel (2008). 38 x 41 inches. I got the idea for this piece while hanging out with the models in their back yard last summer. I was immediately reminded of Grant Wood's American Gothic. I really enjoyed the humorous scene while simultaneously taking note of this family enjoying their afternoon around the urban above ground pool. This work is a tribute to ALL families, regardless of religion, ethnicity or gender. All human beings have a right to happiness in every aspect of their lives.



"Affliction: The Down Side of Up"

Size (HxWxP) : 48x152x2 cm Framed

Style : realism / Tech. : Oil on wood

Theme : Mindscapes / Category : Painting

Year : 2008

Desc. : Oil on panel (2008). This painting explores my views concerning our national obsession with medicating citizens in an effort to subdue and dampen personalities. I believe this obsession carries a steep cost in lost creative potential.



"Frau mit Eiern"

Size (HxW) : 56x38 cm Framed

Style : realism / Tech. : Watercolour on paper

Theme : Imagination / Category : Painting

Sold

Year : 2001

Desc. : In German 'eiern' means 'eggs?', so the title of this piece can be literally translated as 'woman with eggs?'. It is a play on words however, as 'eiern' has an anatomical connotation as well, similar to the meaning of the word 'huevos' in Spanish. All silliness aside, this is an empowerment piece which I seem compelled to produce on occasion. The model is a relative and friend, currently living in Vienna, Austria. She has a presence about her that lives up to the title of this piece. The title also references Jasper Johns' 'Painting with Two Balls.' The painting is owned by the Weissman Art Museum, Minneapolis (USA).



"Nuda Veritas"

Size (HxW) : 97x66 cm

Style : realism / Tech. : Oil on canvas

Theme : Imagination / Category : Painting

Year : 2000

Desc. : Right panel of triptych in oil on canvas. The painting is in the style of the carved bone or ceramic figurines from paleolithic Europe known as "stiff nudes".



"Susanna the Elder - Detail"

Size (HxWxP) : 41x61x1 cm Framed

Style : Figurative Style / Tech. : Oil on hardboard

Theme : Character / People / Category : Painting

Sold

Year : 2004

Desc. : Detail from a 2004 oil on board entitled Susanna the Elder



"The Assessment"

Size (HxW) : 38x25 cm Framed

Style : Figurative Style / Tech. : Watercolour on paper

Theme : Character / People / Category : Painting

Year : 2001

Desc. : Self portrait in watercolors



"Jezebel III"

Size (HxW) : 38x19 cm Framed

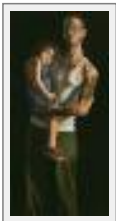
Style : Figurative Style / Tech. : Watercolour on paper

Theme : Portrait / Category : Painting

Sold

Year : 2002

Desc. : Ingrid posing as Jezebel. Archival quality limited edition giclee prints are available.



"I Walk the Line"

Size (HxW) : 152x76 cm Framed

Style : Figurative Style / Tech. : Oil on hardboard

Theme : Allegories / Category : Painting

Sold

Year : 2008

Desc. : This is my latest painting, entitled "I Walk the Line" after Johnny Cash's song of that title. It is an oil painting on board scaled to life at 60" x 30". This painting depicts a young father and daughter, with a nod to Caravaggio's "Pilgrims Madonna." With this work I address the blurring of gender roles in contemporary families and examine the archaic stereotypes of last century.



"Venus on the Half-Shell (Detail)"

Size (HxW) : 46x104 cm

Style : Figurative Style / Tech. : Watercolour on paper

Theme : Water / Category : Painting

Sold

Year : 2003

Desc. : Detail from a 2003 watercolor on paper titled Venus on the Half-Shell. The original painting has sold but limited edition archival quality giclee prints are available.



"Redemption"

Size (HxW) : 30x38 cm Framed

Style : Figurative Style / Tech. : Watercolour on paper

Theme : nudes / Category : Painting

Sold

Year : 2002



"The Marriage"

Size (HxW) : 65x41 cm Framed

Style : Figurative Style / Tech. : Watercolour on paper

Theme : nudes / Category : Painting

Sold

Year : 1999



"The Tired Mamma"

Size (HxW) : 25x64 cm Framed

Style : Figurative Style / Tech. : Oil on board

Theme : nudes / Category : Painting

Year : 2004

Desc. : Portrait of a tired young mother.



"The Tired Mamma - Detail"

Size (HxWxP) : 25x64x1 cm Framed

Style : Figurative Style / Tech. : Oil on hardboard

Theme : nudes / Category : Painting

Year : 2004

Desc. : Detail from a 2004 oil on board entitled The Tired Mamma



"A Convenient Myth - detail"

Size (HxWxP) : 61x91x1 cm Framed

Style : Figurative Style / Tech. : Oil on board

Theme : Story / Category : Painting

Year : 2007

Desc. : Detail from a 2007 oil on board titled The Genesis of Sin II



"Magdalena"

Size (HxW) : 38x58 cm Framed

Style : Figurative Style / Tech. : Watercolour on paper

Theme : Story / Category : Painting

Year : 2003

Desc. : This is an original watercolor on paper depicting a contemporary Magdalena. The painting was finished in 2003. The model is from Minneapolis MN (USA), the jewelry she is wearing was purchased in the vaulted suq of the ancient Syrian city of Aleppo (Halib in Arabic), which is a shoppers paradise, an UNESCO World Heritage site, and perhaps the oldest continuously occupied city in the world, although the residents of Damascus and Sana'a may argue that point.



"The Tie That Binds - Detail"

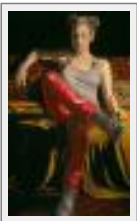
Size (HxW) : 76x56 cm Framed

Style : Figurative Style / Tech. : Watercolour on paper

Theme : Story / Category : Painting

Year : 2002

Desc. : Detail from a 2002 watercolor titled The Tie That Binds



"These Boots Are Made For Walking"

Size (HxW) : 100x61 cm Framed

Style : Figurative Style / Tech. : Oil on board

Theme : Story / Category : Painting

Year : 2007

Desc. : This painting honors all women who have endured difficult circumstances with their dignity intact



"The Tie That Binds"

Size (HxWxP) : 76x56x5 cm Framed

Style : Figurative Style / Tech. : Watercolour

Theme : Mindscapes / Category : Painting

Year : 2002

Desc. : Detail from a 2002 watercolor on paper entitled The Tie That Binds



"I'll Make You Shorter By A Head"

Size (HxW) : 57x38 cm Framed

Style : Figurative Style / Tech. : Watercolour on paper

Theme : Violence / Category : Painting

Sold

Year : 1999

Desc. : I frequently reference other artwork through mine, but perhaps none so directly as this. My title is derived from a direct quote by Elizabeth I, because she was a woman who had tremendous power and an understanding of how to use it. I wanted to armor my Judith with this power. I believe that Klimt painted Judith the seductress. I wanted to paint Judith the executioner.



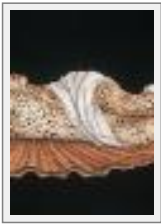
"Compassione"

Size (HxW) : 96x66 cm

Style : Figurative Style / Tech. : oil on strengthened canvas

Theme : Imagination / Category : Painting

Year : 2000



"Venus on the Half-Shell (Detail2)"

Size (HxW) : 46x104 cm Framed

Style : Figurative Style / Tech. : Watercolour on paper

Theme : Imagination / Category : Painting

Sold

Year : 2003

Desc. : Detail from a 2003 watercolor on paper titled Venus on the Half-Shell. The original painting has sold but limited edition archival quality giclee prints are available.



"Out of the Blue"

Size (HxW) : 25x38 cm Framed

Style : Figurative Style / Tech. : Watercolour on paper

Theme : Dream / Category : Painting

Sold

Year : 2001

Desc. : The original painting has sold but limited edition archival quality giclee prints are available.



"Roma Ladrona"

Size (HxW) : 38x31 cm

Style : surrealist / Tech. : Watercolour on paper

Theme : Erotic artwork / Category : Painting

Year : 2002

Desc. : Roma Ladrona can be roughly translated as "Rome the Thief". The subject matter was inspired by Artemis of Ephesus (AKA Diana of Ephesus), although Romulus and Remus certainly must have been in the back of my mind as well. Elements of Botticelli's Venus found their way into this piece - I'm not sure if this was a conscious decision - probably not.



"Hatching the Secret"

Size (HxW) : 57x81 cm Framed

Style : surrealist / Tech. : Watercolour on paper

Theme : Story / Category : Painting

Sold

Year : 1999



"Jezebel"

Size (HxW) : 38x23 cm Framed

Style : surrealist / Tech. : Watercolour on paper

Theme : Mindscapes / Category : Painting

Sold

Year : 2002

Desc. : Ingrid posing as Jezebel. Archival quality limited edition giclee prints are available.



"Midwinter Blues"

Size (HxW) : 104x66 cm Framed

Style : surrealist / Tech. : Watercolour on paper

Theme : Magic / Category : Painting

Sold

Year : 2006

Desc. : The subject of this painting refers to a Finnish-American folk cure for seasonal affective disorder (SAD) that involves bathing with grasses and herbs. The leaves are Labrador Tea (*Rhododendron groenlandicum*), collected from a Black Spruce bog on the shores of the Stony River, near Isabella, Minnesota. Archival quality limited edition giclee prints are available. More recently, I have created an oil on board version of this painting.



"The Legacy"

Size (HxW) : 91x71 cm Framed

Style : surrealist / Tech. : Watercolour on paper

Theme : Magic / Category : Painting

Year : 2003

Desc. : An intimate moment between mother and child



"Venus of Minneapolis"

Size (HxW) : 103x83 cm

Style : surrealist / Tech. : Watercolour on paper

Theme : Magic / Category : Painting

Year : 2003

Desc. : This watercolor on paper depicts a contemporary view of the Venus of Willendorf. I am fascinated by history and archaeology, particularly the work of UCLA professor emerita Marija Gimbutas. This painting is, in many ways, my homage to Professor Gimbutas. Her research into the art, worldview, and lifeways of the matriarchal societies of Old Europe has been a major influence on my own work.



"The Genesis of Sin"

Size (HxW) : 51x104 cm Framed

Style : surrealist / Tech. : Watercolour on paper

Theme : Imagination / Category : Painting

Year : 2006

Desc. : The painting explores my views concerning how women are portrayed in history.



"Transformation"

Size (HxWxP) : 38x31x1 cm Framed

Style : surrealist / Tech. : Watercolour on paper

Theme : Imagination / Category : Painting

Year : 2001



"The Commitment"

Size (HxW) : 48x34 cm Framed

Style : surrealist / Tech. : Watercolour on paper

Theme : Bulls or bullfighting / Category : Painting

Sold

Year : 1999



"A Convenient Myth II"

Size (HxWxP) : 76x216x1 cm Framed

Style : Symbolism / Tech. : Oil on hardboard

Theme : Allegories / Category : Painting

Sold

Year : 2007



"Venus on the Half-Shell"

Size (HxW) : 88x144 cm Framed

Style : surrealist / Tech. : Giclee prints

Theme : Mindscapes / Category : Print

Year : 2003

Desc. : The painting is my interpretation of Botticelli's "Birth of Venus". The title was borrowed from a Kilgore Trout science fiction novel. I enjoy Kurt Vonnegut's humanistic novels. His work has probably influenced my own, although I believe I would have incorporated compassion into my work regardless of whether or not I'd ever read Vonnegut. The original watercolor on paper has sold, but archival quality limited edition giclee prints are available.



"Mother with Child"

Size (HxW) : 104x54 cm Framed

Style : Figurative Style / Tech. : Watercolour on paper

Theme : Allegories / Category : Pyrography

Year : 2004

Desc. : An original watercolor painting utilizing archetypal imagery of the Madonna. The selection of specific colors for the fabric alludes to this. The silver armband is from the city of "father-apple", Alma Ata, Kazakhstan. Although Almaty is a long distance from Palestine, it is possible that portable trade goods such as this could have made their way to the Levant during the pre-islamic and pre-christian eras.