

**"evolution de Sisyphe"**

Size (HxW) : 20x27 cm - Weight : 1600 g

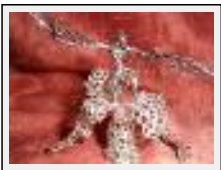
Style : realism / Tech. : -

Theme : - / Category : Sculpture

Sold

Year : 2005

Desc. : liquid metal sculpture, hot tin drop by drop



**"La naissance d'un mythe"**

Size (HxW) : 10x13 cm

Style : Fantasy / Tech. : -

Theme : - / Category : Sculpture

Year : 2003

Desc. : liquid metal sculpture, hot tin drop by drop



**"Phoenix"**

Size (HxW) : 35x12 cm - Weight : 400 g

Style : Fantasy / Tech. : -

Theme : - / Category : Sculpture

Year : 2005

Desc. : liquid metal sculpture, hot tin drop by drop



**"Phoenix I"**

Size (HxWxP) : 21x10x10 cm - Weight : 400 g

Style : Fantasy / Tech. : -

Theme : - / Category : Sculpture



**"Point de vue"**

Size (HxW) : 9x6 cm

Style : Symbolism / Tech. : -

Theme : - / Category : Sculpture

Desc. : liquid metal sculpture, hot tin drop by drop



**"Racines"**

Size (HxW) : 17x6 cm

Style : Symbolism / Tech. : -

Theme : - / Category : Sculpture

Year : 2001

Desc. : liquid metal sculpture, hot tin drop by drop



**"Sisyphé"**

Size (HxW) : 29x8 cm - Weight : 1600 g

Style : Symbolism / Tech. : -

Theme : - / Category : Sculpture

Sold

Year : 2005

Desc. : liquid metal sculpture, hot tin drop by drop



**"The seed"**

Size (HxWxP) : 39x8x8 cm

Style : Symbolism / Tech. : -

Theme : - / Category : Sculpture

Year : 2007