



"Vapeur sortant de la rade de Genève avec jet d'eau"

Size (HxW) : 50x65 cm (15 P)

Style : realism / Tech. : Oil on canvas

Theme : Seascapes / Category : Pyrography

Year : 2010

Abstract Art



"40F n°6"

Size (HxW) : 100x81 cm (40 F)

Style : realism / Tech. : mixed

Theme : Abstraction / Category : Painting

Sold

Year : 2006

Desc. : Self-referential painting in canevas (support / surface). Contrast of the painting in the water set against the painting in the white spirit. Use of the roller. Grain and vibration are looked for.



"15P2"

Size (HxW) : 50x65 cm (15 P)

Style : Abstract / Tech. : mixed

Theme : Landscape / Category : Painting

Year : 2010



"15P3"

Size (HxW) : 50x65 cm (15 P)

Style : Abstract / Tech. : mixed

Theme : Landscape / Category : Painting

Year : 2010



"15P3"

Size (HxW) : 50x65 cm (15 P)

Style : Abstract / Tech. : mixed

Theme : Landscape / Category : Painting

Sold

Year : 2010



"15P5"

Size (HxW) : 50x65 cm (15 P)
Style : Abstract / Tech. : mixed
Theme : Landscape / Category : Painting
Year : 2010



"25P2"

Size (HxW) : 81x60 cm (25 P)
Style : Abstract / Tech. : mixed
Theme : Landscape / Category : Painting
Year : 2010



"25P3"

Size (HxW) : 60x81 cm (25 P)
Style : Abstract / Tech. : mixed
Theme : Landscape / Category : Painting
Year : 2010



"25P4"

Size (HxW) : 60x81 cm (25 P)
Style : Abstract / Tech. : mixed
Theme : Landscape / Category : Painting
Sold
Year : 2010



"40F P1"

Size (HxW) : 81x100 cm (40 F)
Style : Abstract / Tech. : mixed
Theme : Landscape / Category : Painting
Year : 2010



"40F P2"

Size (HxW) : 100x81 cm (40 F)
Style : Abstract / Tech. : mixed
Theme : Landscape / Category : Painting
Year : 2010



"15F n°2"

Size (HxW) : 65x54 cm (15 F)

Style : Abstract / Tech. : mixed

Theme : Abstraction / Category : Painting

Year : 2006

Desc. : Self-referential painting in caneva (support / surface). Contrast of the painting in the water set against the painting in the white spirit. Use of the roller. Grain and vibration are looked for.



"15F n°4"

Size (HxW) : 65x54 cm (15 F)

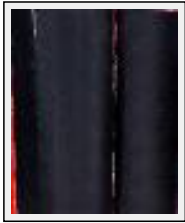
Style : Abstract / Tech. : mixed

Theme : Abstraction / Category : Painting

Sold

Year : 2005

Desc. : Self-referential painting in caneva (support / surface). Contrast of the painting in the water set against the painting in the white spirit. Use of the roller. Grain and vibration are looked for.



"15F n°5"

Size (HxW) : 65x54 cm (15 F)

Style : Abstract / Tech. : mixed

Theme : Abstraction / Category : Painting

Year : 2006

Desc. : Self-referential painting in caneva (support / surface). Contrast of the painting in the water set against the painting in the white spirit. Use of the roller. Grain and vibration are looked for.



"15F n°6"

Size (HxW) : 60x54 cm

Style : Abstract / Tech. : mixed

Theme : Abstraction / Category : Painting

Sold

Year : 2006

Desc. : Self-referential painting in caneva (support / surface). Contrast of the painting in the water set against the painting in the white spirit. Use of the roller. Grain and vibration are looked for.



"15F n°7"

Size (HxW) : 65x54 cm (15 F)

Style : Abstract / Tech. : mixed

Theme : Abstraction / Category : Painting

Year : 2006

Desc. : Self-referential painting in caneva (support / surface). Contrast of the painting in the water set against the painting in the white spirit. Use of the roller. Grain and vibration are looked for.



"25P1"

Size (HxW) : 60x81 cm (25 P)

Style : Abstract / Tech. : Oil

Theme : Abstraction / Category : Painting

Year : 2010

Desc. : Abstract landscape



"2x15F n°1"

Size (HxW) : 65x110 cm

Style : Abstract / Tech. : mixed

Theme : Abstraction / Category : Painting

Year : 2006

Desc. : Self-referential painting in caneva (support / surface). Contrast of the painting in the water set against the painting in the white spirit. Use of the roller. Grain and vibration are looked for.



"2x15F n°2"

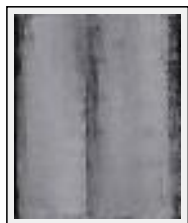
Size (HxW) : 65x110 cm

Style : Abstract / Tech. : mixed

Theme : Abstraction / Category : Painting

Year : 2006

Desc. : Self-referential painting in caneva (support / surface). Contrast of the painting in the water set against the painting in the white spirit. Use of the roller. Grain and vibration are looked for.



"40F n°1"

Size (HxW) : 100x81 cm (40 F)

Style : Abstract / Tech. : mixed

Theme : Abstraction / Category : Painting

Year : 2005

Desc. : Self-referential painting in caneva (support / surface). Contrast of the painting in the water set against the painting in the white spirit. Use of the roller. Grain and vibration are looked for.



"40F n°10"

Size (HxW) : 100x81 cm (40 F)

Style : Abstract / Tech. : mixed

Theme : Abstraction / Category : Painting

Year : 2006

Desc. : Self-referential painting in caneva (support / surface). Contrast of the painting in the water set against the painting in the white spirit. Use of the roller. Grain and vibration are looking for.



"40F n°11"

Size (HxW) : 100x81 cm (40 F)

Style : Abstract / Tech. : mixed

Theme : Abstraction / Category : Painting

Year : 2010



"40F n°2"

Size (HxW) : 100x81 cm (40 F)

Style : Abstract / Tech. : mixed

Theme : Abstraction / Category : Painting

Year : 2005

Desc. : Self-referential painting in caneva (support / surface). Contrast of the painting in the water set against the painting in the white spirit. Use of the roller. Grain and vibration are looked for.



"40F n°3"

Size (HxW) : 100x81 cm (40 F)

Style : Abstract / Tech. : mixed

Theme : Abstraction / Category : Painting

Sold

Year : 2006

Desc. : Self-referential painting in caneva (support / surface). Contrast of the painting in the water set against the painting in the white spirit. Use of the roller. Grain and vibration are looked for.



"40F n°4"

Size (HxW) : 100x81 cm (40 F)

Style : Abstract / Tech. : mixed

Theme : Abstraction / Category : Painting

Sold

Year : 2006

Desc. : Self-referential painting in caneva (support / surface). Contrast of the painting in the water set against the painting in the white spirit. Use of the roller. Grain and vibration

are looked for.

"40F n°5"

Size (HxW) : 100x81 cm (40 F)

Style : Abstract / Tech. : mixed

Theme : Abstraction / Category : Painting

Sold

Year : 2006

Desc. : Self-referential painting in caneva (support / surface). Contrast of the painting in the water set against the painting in the white spirit. Use of the roller. Grain and vibration are looked for.



"40F n°7"

Size (HxW) : 100x81 cm (40 F)

Style : Abstract / Tech. : mixed

Theme : Abstraction / Category : Painting

Year : 2006

Desc. : Self-referential painting in caneva (support / surface). Contrast of the painting in the water set against the painting in the white spirit. Use of the roller. Grain and vibration are looked for.



"40F n°8"

Size (HxW) : 100x81 cm (40 F)

Style : Abstract / Tech. : mixed

Theme : Abstraction / Category : Painting

Sold

Year : 2006

Desc. : Self-referential painting in caneva (support / surface). Contrast of the painting in the water set against the painting in the white spirit. Use of the roller. Grain and vibration are looked for.



"40F n°9"

Size (HxW) : 100x81 cm (40 F)

Style : Abstract / Tech. : mixed

Theme : Abstraction / Category : Painting

Sold

Year : 2006

Desc. : Self-referential painting in caneva (support / surface). Contrast of the painting in the water set against the painting in the white spirit. Use of the roller. Grain and vibration are looked for.





"AR_1"

Size (HxW) : 150x115 cm

Style : Abstract / Tech. : mixed

Theme : Abstraction / Category : Painting

Year : 2010

Desc. : Peinture auto référentielle en support surface



"15P1"

Size (HxW) : 50x65 cm (15 P)

Style : Abstract / Tech. : mixed

Theme : Dish / Category : Painting

Year : 2010

Venezia



"Coucher de soleil orangé sur la salute et voiliers"

Size (HxW) : 60x81 cm (25 P)

Style : realism / Tech. : Oil on canvas

Theme : Seascapes / Category : Painting

Year : 2009

Desc. : Tableau librement interprété d'après un original de Moran Thomas. Belle profondeur



"La Salute de nuit"

Size (HxW) : 50x65 cm (15 P) Framed

Style : realism / Tech. : Oil

Theme : Seascapes / Category : Painting

Year : 2009

Desc. : Huile sur toile en glacis (transparence) avec des éclats de lumière et certaines parties en épaisseur



"Lever de soleil sur Venise"

Size (HxW) : 50x65 cm (15 P) Framed

Style : realism / Tech. : Oil

Theme : Seascapes / Category : Painting

Year : 2009

Desc. : D'après une huile de Moran Thomas. Peinture en glacis.



"Venise flamboyante"

Size (HxW) : 60x81 cm (25 P) Framed

Style : realism / Tech. : Oil

Theme : Seascapes / Category : Painting

Sold

Year : 2009

Desc. : Très beau tableau à la fois moderne et classique. D'après une huile originale de Moran Thomas. Dans le style de Turner ou des impressionnistes.



"Le pont, Venise"

Size (HxW) : 65x54 cm (15 F) Framed

Style : realism / Tech. : Oil on canvas

Theme : Land and sea / Category : Painting

Year : 2008

Desc. : Fine view of Venezia with a bridge. Fine light and reflects on the water



"Coucher de soleil (violacé) sur la Salute"

Size (HxW) : 50x65 cm (15 P) Framed

Style : Figurative Style / Tech. : Oil

Theme : Seascapes / Category : Painting

Year : 2009

Desc. : Tableau librement interprété d'après un original de Moran Thomas.



"La Salute, le matin, Venise"

Size (HxW) : 50x65 cm (15 P) Framed

Style : Figurative Style / Tech. : Oil on canvas

Theme : Seascapes / Category : Painting

Year : 2007

Desc. : Venezia's figurative painting was made in the impressionist style and in the same time, the light inspire me!



"San Giorgio Maggiore (MT), Venise"

Size (HxW) : 50x65 cm (15 P) Framed

Style : Figurative Style / Tech. : Oil on canvas

Theme : Seascapes / Category : Painting

Year : 2009



"Barques et arcades à Venise"

Size (HxW) : 65x50 cm (15 P) Framed

Style : Impressionism / Tech. : Oil on canvas

Theme : Landscape / Category : Painting

Year : 2006

Desc. : Cette peinture de Venise s'approprie une lumière traversière. J'aime particulièrement la perspective du canal et ses reflets. L'influence «impressionniste» a été une de mes approches.



"Brume sur le grand canal près du Rialto, Venise"

Size (HxW) : 50x65 cm (15 P) Framed

Style : Impressionism / Tech. : Oil on canvas

Theme : Landscape / Category : Painting

Year : 2006

Desc. : oil on canevas with aërian perspective



"Coucher de soleil (jaune) sur la Salute"

Size (HxW) : 50x65 cm (15 P) Framed

Style : Impressionism / Tech. : Oil on canvas

Theme : Landscape / Category : Painting

Year : 2008

Desc. : Painting freely inspiring by Thomas Moran. The first layer is all in yellow!



"La Salute le matin"

Size (HxW) : 50x65 cm (15 P) Framed

Style : Impressionism / Tech. : Oil on canvas

Theme : Landscape / Category : Painting

Sold

Year : 2006

Desc. : Venezia's figurative painting was made in the impressionist style and in the same time, the light inspire me!



"Le grand canal à la tombée de la nuit, Venise"

Size (HxW) : 50x65 cm (15 P) Framed

Style : Impressionism / Tech. : Oil on canvas

Theme : Landscape / Category : Painting

Sold

Year : 2006

Desc. : These impressionist style painting of Venezia is representing in the beginning of the night. I hope that it's look good for you...



"Le Rialto par temps de brume et 2 gondoles"

Size (HxW) : 50x65 cm (15 P) Framed

Style : Impressionism / Tech. : Oil on canvas

Theme : Landscape / Category : Painting

Year : 2006

Desc. : oil on caneva with aeriean perspective



"Maison blanche et petit canal, Venise"

Size (HxW) : 65x50 cm (15 P)

Style : Impressionism / Tech. : Oil on canvas

Theme : Landscape / Category : Painting

Year : 2006

Desc. : View of Venezia with big white house vs pure blue sky



"Aurore en rose-bleu sur Venise"

Size (HxW) : 60x81 cm (25 P) Framed

Style : Impressionism / Tech. : Oil

Theme : Seascapes / Category : Painting

Year : 2009

Desc. : Grand tableau d'après Moran Thomas dans le style romantique (William Turner, Félix Ziem)



"Crépuscule sur san Giorgio Maggiore, Venise"

Size (HxW) : 50x65 cm (15 P)

Style : Impressionism / Tech. : Oil on canvas

Theme : Seascapes / Category : Painting

Sold

Year : 2008

Desc. : Painting freely inspiring by Thomas Moran. The first layer is all in red !



"L'Amerigo Vespucci à Venise"

Size (HxW) : 65x50 cm (15 P) Framed

Style : Impressionism / Tech. : Oil on canvas

Theme : Seascapes / Category : Painting

Year : 2007

Desc. : Oil on caneva with aeriean perspective of the Amerigo Vespucci in Venezia



"Le grand canal à Venise au coucher"

Size (HxW) : 60x81 cm (25 P) Framed

Style : Impressionism / Tech. : Oil on canvas

Theme : Seascapes / Category : Painting

Sold

Year : 2007

Desc. : oil on canevas with linear perspective and hot-cold contrast.



"Venise, Salutte sur ciel gris, d'après une aquarel"

Size (HxW) : 60x81 cm (25 P)

Style : Impressionism / Tech. : Oil on canvas

Theme : Seascapes / Category : Painting

Year : 2009

Desc. : From a watercolor of william Turner

Geneva



"Campagne de Colovrex, Canton de Genève (5F)"

Size (HxW) : 27x35 cm (5 F) Framed

Style : realism / Tech. : Oil on canvas

Theme : Landscape / Category : Painting

Year : 2007

Desc. : Landscape figurative painting where fine composition is used. Romantism style (see J.-B. COROT's paintings).



"Genève, jet ambiance bleutée"

Size (HxW) : 65x50 cm (15 P)

Style : realism / Tech. : Oil on canvas

Theme : Landscape / Category : Painting

Year : 2010



"La rade de Genève et le grand Cèdre"

Size (HxW) : 50x65 cm (15 P) Framed

Style : realism / Tech. : Oil on canvas

Theme : Landscape / Category : Painting

Sold

Year : 2006

Desc. : These Hyperealism and Romantic style painting have transparency and lot of contrast. Very good for business gifts ! (frame included)



"Le Creux de Genthod avec Mont-blanc, en soirée"

Size (HxW) : 50x65 cm (15 P) Framed
Style : realism / Tech. : Oil on canvas
Theme : Landscape / Category : Painting
Sold
Year : 2007

Desc. : These Romantic style painting have transparency and. Very good for business gifts
! (frame included)



"Rade de Genève le matin"

Size (HxW) : 35x27 cm (5 F)
Style : realism / Tech. : Oil on canvas
Theme : Landscape / Category : Painting
Year : 2010



"La Neptune devant la rade de Genève"

Size (HxW) : 65x50 cm (15 P) Framed
Style : realism / Tech. : Oil on canvas
Theme : Land and sea / Category : Painting
Sold
Year : 2006

Desc. : These Hyperealism and Romantic style painting have transparency and lot of contrast. REPRODUCTION PROHIBITED



"Jet d'eau rose-bleuté (n°4)"

Size (HxW) : 35x27 cm (5 F) Framed
Style : Figurative Style / Tech. : Oil on canvas
Theme : Landscape / Category : Painting
Sold
Year : 2007

Desc. : These impressionnism style painting have transparency and is very romantic.



"Marche de l'espoir dans la rade de Genève"

Size (HxW) : 50x65 cm (15 P) Framed
Style : Figurative Style / Tech. : Oil on canvas
Theme : Landscape / Category : Painting
Sold
Year : 2010



"Rade de Genève en hiver (n°3)"

Size (HxW) : 50x65 cm (15 P) Framed

Style : Figurative Style / Tech. : Oil on canvas

Theme : Landscape / Category : Painting

Sold

Year : 2008



"Rade de Genève en hiver n°4"

Size (HxW) : 50x65 cm (15 P) Framed

Style : Figurative Style / Tech. : Oil on canvas

Theme : Landscape / Category : Painting

Sold

Year : 2008

Desc. : These Romantic style painting play with transparency and reflecting effects. Very good for business gifts relating with Geneva ! (frame included)



"Coup de Joran sur le Vevey"

Size (HxW) : 46x61 cm (12 P) Framed

Style : Figurative Style / Tech. : Oil on canvas

Theme : Seascapes / Category : Painting

Year : 2007

Desc. : These Romantic style painting have transparency and. Very good for business gifts !



"La rade de Genève en hiver"

Size (HxW) : 50x65 cm (15 P) Framed

Style : Figurative Style / Tech. : Oil on canvas

Theme : Seascapes / Category : Painting

Sold

Year : 2007

Desc. : These Romantic style painting have transparency and. Very good for business gifts ! (frame included)



"Le creux de Genthod, le soir, avec le Mont-Blanc"

Size (HxW) : 50x65 cm (15 P) Framed

Style : Figurative Style / Tech. : Oil

Theme : Seascapes / Category : Painting

Year : 2009

Desc. : 3e version de ce très beau paysage avec le Mont-Blanc dans le lointain dans les couleurs du soir d'automne. Dans le style de l'école Genevoise : Louis Baudit ou Louis Gianoli



"Rade de Genève en hiver (25P)"

Size (HxW) : 60x81 cm (25 P) Framed

Style : Figurative Style / Tech. : Oil on canvas

Theme : Seascapes / Category : Painting

Year : 2010

Desc. : Cette peinture figurative s'approprie la rade de Genève en hiver, qui m'a fait vibrer par sa lumière contrastée et sa transparence. Le Salève à l'arrière plan est traité en contre jour d'un beau bleu profond. Le lac est strié de bandes bleues, violacées et blanches, reflétant un ciel découpé en 2 zones. L'influence «romantique» a été une de mes approches. Dans le style de l'école Genevoise (Louis Baudit et Louis Gianoli). Idéal comme cadeau d'entreprise !



"Genève vue du signal de Bougy"

Size (HxW) : 50x65 cm (15 P)

Style : Figurative Style / Tech. : Oil on canvas

Theme : Land and sea / Category : Painting

Year : 2008

Desc. : These Romantic style painting play with transparency. Very good for business gifts ! (frame included)



"Le Creux de Genthod avec Mont-blanc, en soirée (n°)"

Size (HxW) : 50x65 cm (15 P) Framed

Style : Figurative Style / Tech. : Oil on canvas

Theme : Dish / Category : Painting

Sold

Year : 2008

Desc. : These Romantic style painting of the Lake of Geneva have a lot of transparencies.



"Le sentier des Écrevisses en aut"

Size (HxW) : 50x65 cm (15 P) Framed

Style : Hyperrealist / Tech. : Oil on canvas

Theme : Landscape / Category : Painting

Year : 2006

Desc. : These Hyperrealism and Romantic style painting have transparency and lot of contrast.



"Coquelicots et Jura bleuté"

Size (HxW) : 60x81 cm (25 P) Framed

Style : Impressionism / Tech. : Oil on canvas

Theme : Landscape / Category : Painting

Sold

Year : 2006

Desc. : Poppy's landscape figurative painting where complementary colors are used. Impressionism style (see Claude MONET paintings).



"Jet d'eau et Vapeur, Genève"

Size (HxW) : 50x65 cm (15 P) Framed

Style : Impressionism / Tech. : Oil on canvas

Theme : Landscape / Category : Painting

Sold

Year : 2007

Desc. : Geneva's painting in the Impressionist style



"L'arbre du Creux de Genthod"

Size (HxW) : 35x27 cm (5 F) Framed

Style : Impressionism / Tech. : Oil on canvas

Theme : Landscape / Category : Painting

Sold

Year : 2006

Desc. : These impressionism and romantic style painting have transparency and lot of contrast.



"Rade de Genève en jaune et bleu"

Size (HxW) : 50x65 cm (15 P) Framed

Style : Impressionism / Tech. : Oil on canvas

Theme : Landscape / Category : Painting

Sold

Year : 2007

Desc. : These Romantic style painting have transparency and. Very good for business gifts ! (frame included)



"Vapeur, jet d'eau et petit Salève"

Size (HxW) : 50x61 cm (12 F) Framed

Style : Impressionism / Tech. : Oil on canvas

Theme : Landscape / Category : Painting

Sold

Year : 2006

Desc. : These Romantic style painting have transparency and. Very good for business gifts ! (frame included)



"Le Jet d'eau de Genève (rosé)"

Size (HxW) : 35x27 cm (5 F) Framed

Style : Impressionism / Tech. : Oil on canvas

Theme : Land and sea / Category : Painting

Sold

Year : 2006

Desc. : These impressionism style painting have transparency and lot of contrast.



"Voilier sortant de la rade de Genève"

Size (HxW) : 35x27 cm (5 F)

Style : Impressionism / Tech. : Oil on canvas

Theme : Land and sea / Category : Painting

Year : 2006

Desc. : These impressionism and romantic style painting have transparency and lot of contrast.

Nature



"Campagne de Colovrex, Canton de Genève (15F)"

Size (HxW) : 50x65 cm (15 P) Framed

Style : realism / Tech. : Oil on canvas

Theme : Landscape / Category : Painting

Year : 2006

Desc. : Landscape figurative painting where fine composition is used. Romanticism style (see J.-B. COROT's paintings).



"Les coquelicots et le Jura, rte de Colovrex (4e)"

Size (HxW) : 50x65 cm (15 P) Framed

Style : realism / Tech. : Oil on canvas

Theme : Landscape / Category : Painting

Sold

Year : 2007

Desc. : Poppy's landscape figurative painting where complementary colors are used. Impressionism style (see Claude MONET paintings).



"La mer du Nord, La Panne, Belgique"

Size (HxW) : 60x81 cm (25 P) Framed

Style : realism / Tech. : Oil on canvas

Theme : Seascapes / Category : Painting

Year : 2006

Desc. : See landscape with storm sky. Contrast and transparency. Realism style.



"Champs de coquelicots en Provence"

Size (HxW) : 50x65 cm (15 P) Framed

Style : Figurative Style / Tech. : Oil on canvas

Theme : Landscape / Category : Painting

Sold

Year : 2007

Desc. : Poppy's landscape figurative painting where complementary colors are used. Impressionism style (see Claude MONET paintings).



"Champs de coquelicots vers Uzès"

Size (HxW) : 50x65 cm (15 P) Framed

Style : Figurative Style / Tech. : Oil on canvas

Theme : Landscape / Category : Painting

Sold

Year : 2008

Desc. : Poppy's landscape figurative painting where complementary colors are used. Impressionism style (see Claude MONET paintings).



"Fleurs d'été à Chambésy"

Size (HxW) : 50x65 cm (15 P) Framed

Style : Figurative Style / Tech. : Oil on canvas

Theme : Landscape / Category : Painting

Year : 2007

Desc. : Flowers' landscape painting. Impressionism style.



"Champs de coquelicots près d'Uzes, France"

Size (HxW) : 60x81 cm (25 P) Framed

Style : Impressionism / Tech. : Oil on canvas

Theme : Landscape / Category : Painting

Year : 2007

Desc. : Poppy's landscape figurative painting where complementary colors are used. Impressionism style (see Claude MONET paintings).



"Le champs de coquelicots en Camargue"

Size (HxW) : 27x35 cm (5 F) Framed

Style : Impressionism / Tech. : Oil on canvas

Theme : Landscape / Category : Painting

Sold

Year : 2007

Desc. : From a beautiful picture of Isabelle Mauny