



"Trans Bound"

Dimensions (HxLxP) : 41x122x2 cm Encadré

Style : Symbolisme / Tech. : Technique mixte

Thème : Abstraction / Catégorie : Peinture

Année : 2007

Desc. : From the exhibition Elevating the Spirit. Collage, acrylic, oil based lino ink, linen & synthetic thread on stretched canvas



"Layers, Beneath The Surface"

Dimensions (HxLxP) : 103x123x3 cm Encadré

Style : Symbolisme / Tech. : Technique mixte

Thème : Abstraction / Catégorie : Collage/Dessin

Année : 2002

Desc. : From the exhibition Cross Currents. Collage, paper, pastel, acrylic on stretched canvas panels x 4



"Trans X's, No.1"

Dimensions (HxLxP) : 122x92x2 cm Encadré

Style : Symbolisme / Tech. : Technique mixte

Thème : Abstraction / Catégorie : Collage/Dessin

Année : 2007

Desc. : From the exhibiton Elevating the Spirit. Mixed Media - graphite, acrylic, oil, collage, rice paper on stretched canvas

Light, Time & Facade Exhibition Work



"Multifaceted Series, No.1"

Dimensions (HxL) : 48x33 cm

Style : Symbolisme / Tech. : Peinture numérique

Thème : Abstraction / Catégorie : Impression

Année : 2007

Desc. : Limited Edition 25. From the exhibition Light, Time & Facade. Medium: Collage/Digital image. Archival giclee print on 100% rag paper. My response to 'Light, Time and Façade' has been to discern and depict metaphorically, multifaceted aspects of one's being in both mind and matter or existence and universe. The vessel (symbol for being), in light and time absorbs, reflects, refracts and transmits information to and from the surfaces around. Ellie Crystal states "Reality is a game of illusion, delusion, perception and deception"... "The trickster (an archetype, a boundary dweller) exists to question, to cause us to question and not accept things blindly." In the light of spirit I reflect that the boundaries that separate us are not as real as they appear, that our personal distinctions are illusory and that we are connected with all in the sea of universal consciousness – a fusion, a melting point.



"Multifaceted Series, No.2"

Dimensions (HxL) : 48x33 cm

Style : Symbolisme / Tech. : Peinture numérique

Thème : Abstraction / Catégorie : Impression

Année : 2007

Desc. : Limited Edition 25. From the exhibition Light, Time & Facade. Medium: Collage/Digital image. Archival giclee print on 100% rag paper. My response to 'Light, Time and Façade' has been to discern and depict metaphorically, multifaceted aspects of one's being in both mind and matter or existence and universe. The vessel (symbol for being), in light and time absorbs, reflects, refracts and transmits information to and from the surfaces around. Ellie Crystal states "Reality is a game of illusion, delusion, perception and deception"... "The trickster (an archetype, a boundary dweller) exists to question, to cause us to question and not accept things blindly." In the light of spirit I reflect that the boundaries that separate us are not as real as they appear, that our personal distinctions are illusory and that we are connected with all in the sea of universal consciousness – a fusion, a melting point.



"Multifaceted Series, No.3"

Dimensions (HxL) : 48x33 cm

Style : Symbolisme / Tech. : Peinture numérique

Thème : Abstraction / Catégorie : Impression

Année : 2007

Desc. : Limited Edition 25. From the exhibition Light, Time & Facade. Medium: Collage/Digital image. Archival giclee print on 100% rag paper. My response to 'Light, Time and Façade' has been to discern and depict metaphorically, multifaceted aspects of one's being in both mind and matter or existence and universe. The vessel (symbol for being), in light and time absorbs, reflects, refracts and transmits information to and from the surfaces around. Ellie Crystal states "Reality is a game of illusion, delusion, perception and deception"... "The trickster (an archetype, a boundary dweller) exists to question, to cause us to question and not accept things blindly." In the light of spirit I reflect that the boundaries that separate us are not as real as they appear, that our personal distinctions are illusory and that we are connected with all in the sea of universal consciousness – a fusion, a melting point.



"Multifaceted Series, No.4"

Dimensions (HxL) : 48x33 cm

Style : Symbolisme / Tech. : Peinture numérique

Thème : Abstraction / Catégorie : Impression

Année : 2007

Desc. : Limited Edition 25. From the exhibition Light, Time & Facade. Medium: Collage/Digital image. Archival giclee print on 100% rag paper. My response to 'Light, Time and Façade' has been to discern and depict metaphorically, multifaceted aspects of one's being in both mind and matter or existence and universe. The vessel (symbol for being), in light and time absorbs, reflects, refracts and transmits information to and from

the surfaces around. Ellie Crystal states “Reality is a game of illusion, delusion, perception and deception”... “The trickster (an archetype, a boundary dweller) exists to question, to cause us to question and not accept things blindly.” In the light of spirit I reflect that the boundaries that separate us are not as real as they appear, that our personal distinctions are illusory and that we are connected with all in the sea of universal consciousness – a fusion, a melting point.

Elevating the Spirit Exhibition Work



"Collective Unconscious 3=1=Enlightenment"

Dimensions (HxLxP) : 51x102x3 cm

Style : Abstrait / Tech. : Technique mixte

Thème : Abstraction / Catégorie : Peinture

Année : 2007

Desc. : Mixed Mediums: Water & oil based inks, oil paint, linen thread, drawing mediums on stretched canvas.



"Embodiment, Divine Source"

Dimensions (HxLxP) : 47x83x2 cm Encadré

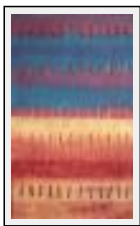
Style : Abstrait / Tech. : Technique mixte

Thème : Abstraction / Catégorie : Peinture

Vendu

Année : 2007

Desc. : Mixed Medium: Acrylic, linen thread on stretched canvas



"Mantra I's"

Dimensions (HxLxP) : 76x47x2 cm Encadré

Style : Abstrait / Tech. : Technique mixte

Thème : Abstraction / Catégorie : Peinture

Année : 2007

Desc. : Acrylic, linen & cotton threads, banana fibre, collage on stretched canvas



"Spirit Matter Cosmos"

Dimensions (HxLxP) : 665x970x50 cm Encadré

Style : Abstrait / Tech. : Technique mixte

Thème : Abstraction / Catégorie : Peinture

Année : 2004

Desc. : Acrylic, linen thread, rice paper, collage on stretched canvas with lime wash colour frame. Exhibited 2004 Sense of Attachment, Sugarama Gallery, Mourilyan, Qld. In Elevating the Spirit, connections, relationships and unity are explored through visual language elements and symbology, between one's inner-self (soul, spirit, life-force, essence), psyche and the outer world. Notions of passage, transition (change), duality, reflection, containment and synthesis (fusion) are contemplated and reflected upon.



"Alignment"

Dimensions (HxLxP) : 122x92x40 cm

Style : Symbolisme / Tech. : Technique mixte

Thème : Abstraction / Catégorie : Peinture

Année : 2007

Desc. : Graphite, acrylic on Stretched Canvas. From the exhibition Elevating the Spirit.



"All Embracing, Where Spirit Resides"

Dimensions (HxL) : 38x35 cm Encadré

Style : Abstrait / Tech. : Linoléum

Thème : Abstraction / Catégorie : Impression

Année : 2007

Desc. : Artist's Proof A/P 1/2 - 2 colour block lino print . Medium: Water & oil based lino Ink and linen thread stitched on rag paper.



"Three Panel Transitional Page Format"

Dimensions (HxL) : 33x48 cm

Style : Abstrait / Tech. : Reproduction en giclée

Thème : Abstraction / Catégorie : Impression

Année : 2007

Desc. : From the exhibition 'Elevating the Spirit'. Medium: Photoshop assemblage image. 150 Limited Edition Giclee pigment ink print on 100% rag paper

Fibre Work



"Forest Floor Embossment"

Dimensions (HxLxP) : 107x86x5 cm Encadré

Style : Abstrait / Tech. : Technique mixte

Thème : Abstraction / Catégorie : Collage

Année : 2001

Desc. : Creative Fibre Award. Hand Embossed Himalayan Rice Paper, linen and cotton threads on stretched canvas.